

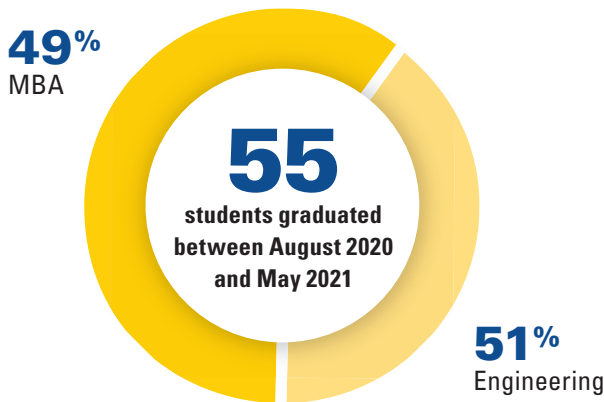
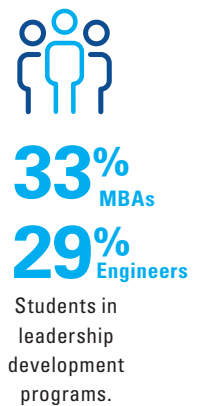
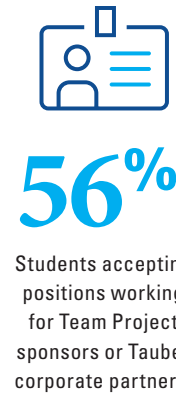
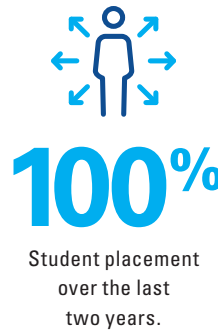
2021 Employment Profile

The Tauber Institute for Global Operations

is a partnership between the University of Michigan College of Engineering and Stephen M. Ross School of Business, and a 30-member Industry Advisory Board. The Tauber Institute was developed to meet industry's need for a new kind of graduate—one who has an exceptional academic background, extensive professional experience, and most importantly, can successfully integrate business and engineering perspectives to lead global operations into the future.

2021 Class Profile

Graduate business and engineering students in various degree programs make up the Tauber Institute community. Through the Tauber Institute, all students complete a rigorous joint business and engineering curriculum and participate in a Tauber Team Project.



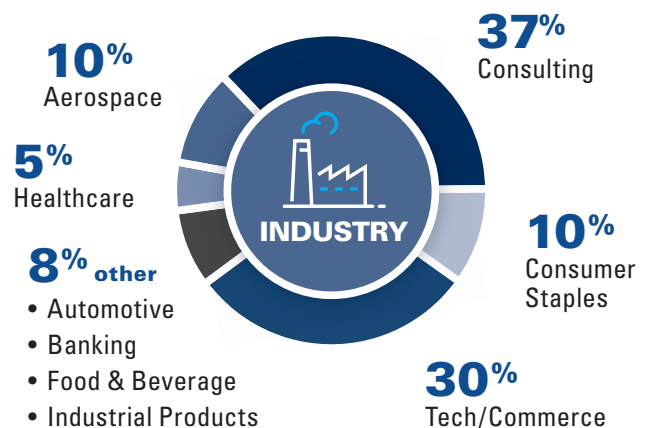
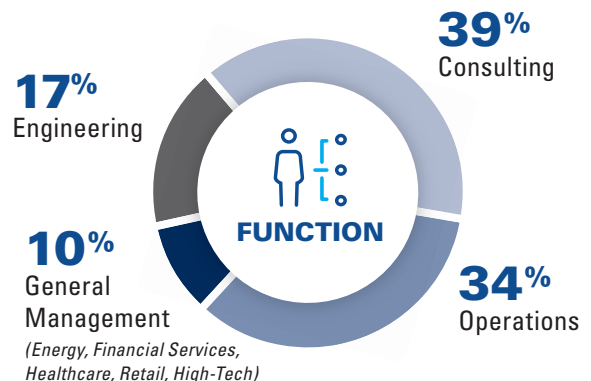
MBA Job Titles

Associate Consultant
Associate Director
Business Program Manager
Consultant
Global Freight Manager
Global Sourcing Manager
Operations Manager
Product Manager
Senior Consultant
Senior Program Manager
Strategic Engineer
Strategic Planner
Strategy & Sourcing Manager
Vice President

Engineering Job Titles

Associate Consultant
Business Analyst
Consultant
Data Science Senior Analyst
Global Sourcing Manager
Industrial Engineer (Senior)
Operations Support Engineer
Operations Manager
Program Manager (Senior)
Quality Engineer
Research Engineer
Robotics Engineer
Systems Engineer
Technical Program Manager
Technical Solutions Engineer

The following statistics reflect input from 55 of the 55 students.



academia strengthening ties industry

ups george d smith prize

2021 Tauber Institute Placement Statistics August 2020–May 2021 Graduates

FUNCTION	BASE				SIGNING BONUS	
	Average	Median	Min	Max	%	Median
MBA 26 of 26 reporting						
Consulting	\$152,111	\$160,000	\$76,000	\$165,000	100%	\$30,000
Financial Services	\$138,000	\$138,000	\$138,000	\$138,000	100%	\$25,000
General Management	\$131,444	\$130,000	\$120,000	\$150,000	100%	\$40,000
Operations/Supply Chain Management	\$138,600	\$135,000	\$130,000	\$158,000	100%	\$30,000
EGL 10 of 14 reporting						
Consulting	\$91,150	\$87,500	\$70,000	\$119,600	100%	\$10,000
Engineering	\$90,667	\$91,000	\$81,000	\$100,000	100%	\$7,750
Operations/Supply Chain Management	\$120,000	\$120,000	\$120,000	\$120,000	100%	\$15,000
EGP 7 of 12 reporting						
Consulting	\$74,000	\$74,000	\$74,000	\$74,000	100%	\$12,000
Engineering	\$87,376	\$95,000	\$75,000	\$96,000	100%	\$5,000
Operations/Supply Chain Management	\$87,000	\$105,000		\$130,000		

INDUSTRY	BASE				SIGNING BONUS	
	Average	Median	Min	Max	%	Median
MBA 26 of 32 reporting						
Automotive/Transportation	\$150,000	\$150,000	\$150,000	\$150,000	100%	\$25,000
Banking	\$138,000	\$138,000	\$138,000	\$138,000	100%	\$25,000
Consulting	\$152,111	\$160,000	\$76,000	\$165,000	100%	\$30,000
Consumer Staples	\$132,500	\$132,500	\$130,000	\$135,000	66%	\$20,000
Food & Beverage	\$158,000	\$158,000	\$158,000	\$158,000	100%	\$30,000
Health Care	\$130,000	\$130,000	\$130,000	\$130,000	100%	\$40,000
Industrial Products	\$125,000	\$125,000	\$125,000	\$125,000	100%	\$25,000
Tech/Commerce	\$131,000	\$130,000	\$120,000	\$140,000	100%	\$40,000
EGL 10 of 14 reporting						
Aerospace	\$90,667	\$91,000	\$81,000	\$100,000	33%	\$7,750
Consulting	\$91,150	\$87,500	\$70,000	\$119,600	60%	\$10,000
Consumer Staples	\$120,000	\$120,000	\$120,000	\$120,000	100%	\$15,000
EGP 11 of 12 reporting						
Aerospace	\$96,000	\$96,000	\$96,000	\$96,000	100%	\$5,000
Automotive/Transportation	\$87,500	\$87,500	\$70,000	\$105,000		
Consulting	\$74,000	\$74,000	\$74,000	\$74,000	100%	\$12,000
Healthcare	\$75,000	\$75,000	\$75,000	\$75,000	100%	\$5,000
Tech/Commerce	\$87,647	\$95,440		\$130,000	83%	\$5,000

List of Employers for the Class of 2021

A.B. InBev	Boston Consulting Group	Fortive	Pfizer
Accenture	Capital One	Foxconn	Premier International
AlixPartners	Deloitte	General Motors	Target
Alvarez and Marsal	DHL Consulting	Kearney	Tesla
Amazon	Electronic Arts	McKinsey	TuSimple
Aurora Flight Sciences	Emerson	Microsoft	Vynamic
Bain & Company	Epic	Optum	Western Digital
The Boeing Company	Ford Motor Company	Partners in Performance	